

APPENDIX

PRINCIPAL TABLES

TABLE I
Area and Population by Taluks

Sl. No.	Taluk	Area				Population in 1961				
		Commissioner for Land Records, Survey and Settlement		Survey of India		Rural	Urban	Total		
		Sq. miles	Sq. Km.	Sq. miles	Sq. Km.					
1.	Badami	531.9	1,377.6	540.00	1,398.59	131,608	24,292	155,900
2.	Bagalkot	351.5	910.4	355.67	921.18	80,486	39,934	120,420
3.	Bagewadi	764.3	1,979.5	761.08	1,971.18	152,119	12,009	164,128
4.	Bijapur	1,027.8	2,662.0	1,022.93	2,649.37	172,053	78,854	250,907
5.	Bilgi	327.4	848.0	300.22	777.56	68,160	..	68,160
6.	Hungund	512.0	1,326.1	524.72	1,359.01	113,195	46,973	160,168
7.	Indi	854.3	2,212.6	854.75	2,213.79	165,474	10,616	176,090
8.	Jamkhandi	448.3	1,161.1	448.29	1,161.06	102,663	65,056	167,719
9.	Muddebihal	570.4	1,477.4	579.67	1,501.33	121,830	12,811	134,641
10.	Mudhol	349.1	904.2	368.84	955.29	76,374	22,861	99,235
11.	Sindgi	829.9	2,149.4	835.38	2,163.62	162,810	..	162,810
	Total	6,566.9	17,008.3	6,591.55	17,071.98	1,346,772	313,406	1,660,178

BIJAPUR DISTRICT

523

TABLE II
Statement showing the details regarding survey and settlement of Taluks in Bijapur District

Sl. No.	Name of the Taluk	Total number of villages		Year of Revenue Survey		Year of Revision Survey		Year of Settlement			
		Government	Inam	Government	Inam	Government	Inam	Revenue		First Revision	
								Government	Inam	Government	Inam
1	2	3	4	5	6	7	8	9	10	11	12
1.	Bijapur	101	10	1844	1851-65	1873	1860-96	1844	1920-41	1874	1957
2.	Bagewadi	112	9	1853	1851-64	1874	1852-64	1853	1921-49	1875	1957
3.	Muddebihal	124	32	1844	1853-69	1874	1850-64	1845	1890-99	1875	1957
4.	Sindgi	136	15	1853	1854-61	1872	1855-64	1854	1921-49	1873	1957
5.	Indi	113	11	1841	1859-63	1871	1860-64	1842	1921-49	1873	1957
6.	Bagalkot and Bilgi Petha	126	33	1849	1849-64	1880	1852-65	1850	1921-50	1881	1957
7.	Hungund	148	22	1849	1849-64	1880	1852-64	1851	1921-49	1880	1957
8.	Badami	131	28	1848	1850-62	1879	1955-64	1850	1921-51	1880	1957
9.	Mudhol	81	..	1864	..	1883	..	1865	..	1894	..
10.	Jamkhandi	68	2	1907	1851-52	1876-88	1931-53	1907-18	1921	1876-88	1957

TABLE II—contd.

Sl. No.	Name of the Taluk	Year of Settlement		Maximum rates of First Revision				Settlement rates as per Second Revision Settlement*					
		Second Revision		Group No.	Dry Crop	Rice	Garden	Group No.	Dry Crop	Garden	Rice		
		Government	Inam										
		(In Rs. As. and Ps.)											
		13	14	15	16	17	18	19	20	21	22		
1.	Bijapur	1907	..	1	1 2 0	4 0 0	5 0 0	1	1 2 0	8 0 0	8 0 0
						2	1 1 0	..	5 0 0	2	1 0 0
						3	0 14 0	8 0 0	8 0 0				
						4	0 12 0	8 0 0	8 0 0				
						5	0 14 0				
2.	Bagewadi	1908	..	1	1 2 0	4 0 0	5 0 0	1	1 2 0	4 0 0	4 0 0
						2	1 0 0	..	5 0 0	2	1 0 0
						4	0 12 0	..	8 0 0				
3.	Muddebihal	1907	..	1	1 2 0	4 0 0	5 0 0	1	1 2 0	4 0 0	4 0 0
						2	1 1 0	4 0 0	5 0 0	2	1 1 0
4.	Sindgi	1907-08	..	1	1 2 0	4 0 0	5 0 0	1	1 2 0	4 0 0	4 0 0
						2	1 1 0	4 0 0	5 0 0	2	1 1 0
						3	1 0 0	..	5 0 0				
5.	Indi	1907-08	..	1	1 2 0	4 0 0	5 0 0	1	1 2 0	4 0 0	4 0 0
						2	1 1 0	4 0 0	5 0 0	2	1 0 0
6.	Bagalkot and Bilgi Petha	1916	..	1	1 10 0	1	1 13 0	8 0 0	8 0 0
						2	1 6 0	2	1 8 0
						3	1 4 0	8 0 0	..	3	1 6 0
						5	1 0 0	4	1 4 0
7.	Hungund	1916	..	1	1 4 0	8 0 0	8 0 0	1	1 8 0	..	8 0 0
						2	1 1 0	8 0 0	8 0 0	2	1 6 0	8 0 0	..
						3	1 1 0	8 0 0	8 0 0	3	1 4 0

BIJAPUR DISTRICT

525

TABLE II—concl'd.

Sl. No.	Name of the Taluk	Year of Settlement		Maximum rates of First Revision				Settlement rates as per Second Revision Settlement*											
		Second Revision		Group No.	Dry Crop	Rice	Garden	Group No.	Dry Crop	Garden	Rice								
		Government	Inam																
		(In Rs. As. Ps.)																	
		13	14									15	16	17	18	19	20	21	22
8. Badami	1916	..	1	1 4 0	8 0 0	8 0 0	1	1 10 0	..	8 0 0							
				2	1 2 0	8 0 0	8 0 0	2	1 6 0	8 0	..								
				4	1 8 0	3	1 2 0								
9. Mudhol	1925-26	..	1	1 8 0	1	1 8 0							
				2	1 6 0	2	1 6 0								
				3	1 4 0	3	1 4 0								
10. Jamkhandi	1920	..	2	2 6 0	4	1 4 0							
				3	2 4 0	4	1 4 0	8 0 0	8 0 0								
				4	1 14 0												
				5	1 12 0												
				6	1 8 0												

*For latest settlement rates, please see Chapter XI—Revenue Administration.

TABLE III
Working population classified by Industrial Categories (1961 Census)

Sl. No.	Workers	Rural		Urban		Total	
		Men	Women	Men	Women	Men	Women
1.	As cultivator	2,39,500	1,14,285	12,610	5,459	2,52,110	1,19,744
2.	As agricultural labourer	98,211	1,13,796	5,834	5,206	1,04,045	1,19,002
3.	In mining, quarrying, livestock, forestry, fishing, hunting and plantations, orchards and allied activities.	7,403	1,235	1,090	289	8,493	1,524
4.	In household industry	28,374	17,534	20,510	18,378	38,884	35,912
5.	In manufacturing other than household industry.	4,439	792	8,149	2,171	12,588	2,963
6.	In construction	3,833	348	2,638	294	6,471	642
7.	In trade and commerce	8,244	3,053	12,863	1,447	21,107	4,500
8.	In transport, storage and communications	1,170	5	3,215	11	4,385	16
9.	In other services	18,746	6,191	16,413	4,209	35,159	10,400
	Total	4,09,920	2,57,239	83,322	37,464	4,93,242	2,94,703

Source :—Census of India 1961—Volume XI—Mysore—Part-II-A, General Population Totals, pp. 198-202.

TABLE IV
List of Prominent Shandies in Bijapur District

<i>Sl. No.</i>	<i>Place of Shandy</i>			<i>Day when held</i>	<i>Name of taluk</i>			<i>Daily average attendance</i>
1	2			3	4			5
1.	Indi	Tuesday	..	Indi	..	1,000
2.	Chadchan	Wednesday	..	Indi	..	2,000
3.	Sindgi	Sunday	..	Sindgi	..	1,000
4.	Bijapur	Sunday	..	Bijapur	..	10,000
5.	Tikota	Thursday	..	Bijapur	..	2,000
6.	Bagewadi	Monday	..	Bagewadi	..	2,000
7.	Muddebihal	Thursday	..	Muddebihal	..	1,000
8.	Talikot	Monday	..	Muddebihal	..	2,000
9.	Badami	Monday	..	Badami	..	5,000
10.	Guledgud	Wednesday	..	Badami	..	10,000
11.	Kerur	Tuesday	..	Badami	..	8,000
12.	Bagalkot	Wednesday	..	Bagalkot	..	5,000
13.	Ilkal	Thursday	..	Hungund	..	1,000
14.	Kamatagi	Friday	..	Hungund	..	1,000
15.	Mudhol	Friday	..	Mudhol	..	5,000
16.	Mahalingpur	Tuesday	..	Mudhol	..	2,000

TABLE V

List of important fairs in Bijapur District

<i>Sl. No.</i>	<i>Name of the Fair</i>	<i>Taluk</i>	<i>Place</i>	<i>Period</i>	<i>Attendance in persons (approximate)</i>
1	2	3	4	5	6
1.	Golgeri fair	Sindgi	Golgeri	Chaitra Shuddha 14 to Chaitra Bahula 5.	10,000
2.	Shri Banashankari fair	Badami	Cholachgud	Pushya Shuddha 3 to Pushya Bahula 7.	50,000
3.	Shri Sangameshwar fair	Hungund	Sangam	Chaitra Bahula 3 to Vaishakha Shuddha 4.	20,000
4.	Bablad fair	Bijapur	Bablad	Magha Bahula 30 to Phalguna Shuddha 4.	15,000
5.	Shri Siddheshwar fair	Bijapur	Bijapur	Margashira Bahula 15 to Pushya Shuddha 8.	30,000

BIJAPUR DISTRICT

539

TABLE VI-A
Livestock population in Bijapur District — Cattle and Buffaloes as per Livestock Census 1961

Sl. No.	Taluk		Cattle			Buffaloes		
			Male	Female	Total	Male	Female	Total
1.	Bijapur	..	19,942	33,977	53,919	2,027	18,764	20,791
2.	Bagewadi	..	31,821	18,474	50,295	3,786	19,059	22,845
3.	Bagalkot	..	17,795	11,622	29,417	1,267	12,966	14,233
4.	Badami	..	27,469	19,633	47,102	1,882	18,845	20,727
5.	Hungund	..	25,918	14,283	40,201	1,967	16,957	18,924
6.	Muddebihal	..	25,517	13,980	39,497	2,782	16,448	19,230
7.	Jamkhandi	..	21,224	18,233	39,457	2,491	16,200	18,691
8.	Mudhol	..	16,786	10,990	27,776	1,686	12,978	14,664
9.	Indi	..	39,126	34,588	73,714	4,244	16,755	20,999
10.	Sindgi	..	38,371	21,487	59,858	3,581	16,432	20,013
11.	Bilgi	..	16,773	10,317	27,090	1,040	10,182	11,222
Total		..	2,80,742	2,07,584	4,88,326	26,753	1,75,586	2,02,339

TABLE VI-B

Livestock population in Bijapur District — Number of other livestock as ascertained by the Census of 1961

Sl. No.	Taluk		Sheep	Goats	Horses and Ponies	Mules	Donkeys	Pigs
1.	Bijapur	40,456	40,899	772	..	381	725
2.	Bagewadi	14,699	33,014	523	1	312	571
3.	Bagalkot	15,556	20,297	185	..	108	175
4.	Badami	30,566	25,477	247	12	137	179
5.	Hungund	21,740	23,193	135	2	421	549
6.	Muddebihal	16,035	26,823	579	8	170	623
7.	Jamkhandi	18,451	24,782	305	1	528	350
8.	Mudhol	16,064	17,557	219	..	139	261
9.	Indi	27,664	45,248	407	..	163	1,232
10.	Sindgi	22,041	33,852	782	..	369	1,762
11.	Bilgi	14,230	17,925	112	..	115	45
Total			2,38,108	3,09,067	4,366	24	2,843	6,472

BIJAPUR DISTRICT

631

TABLE VI-C
Livestock population in Bijapur District—Poultry (1961 Census)

Sl. No.	Taluk	Fowls				Ducks				Others	Total poultry
		Hens	Cocks	Chicken	Total	Ducks	Drakes	Ducklings	Total		
1. Bijapur	29,463	2,327	19,340	51,130	94	459	47	600	..	51,730
2. Bagewadi	15,297	2,941	20,711	38,949	6	15	..	21	..	38,970
3. Bagalkot	9,218	1,408	9,477	20,103	2	7	4	13	4	20,120
4. Badami	17,767	2,904	13,675	34,346	112	3	..	115	22	34,483
5. Hungund	14,972	2,914	17,470	35,456	21	3	..	24	5	35,385
6. Muddebihal	11,862	2,522	14,215	28,599	2	16	5	23	8	28,630
7. Jamkhandi	13,454	2,408	12,566	28,428	28,428
8. Mudhol	6,986	1,060	5,467	13,513	1	3	..	4	9	13,526
9. Indi	21,379	4,498	25,135	51,012	34	56	23	113	1	51,126
10. Sindgi	20,000	6,618	25,815	53,427	56	157	50	263	..	53,690
11. Bilgi	6,435	937	6,443	13,815	2	2	..	4	..	13,819
Total	1,67,827	30,537	1,70,314	3,68,678	330	721	129	1,180	49	3,69,907

TABLE VII—A

List of **Dak Bungalows, Rest Houses including Circuit House and Inspection Bungalows** in Bijapur Division, Bijapur District

<i>Sl. No.</i>	<i>Name of the Bungalow and class</i>	<i>Approach road and the distance from the nearest main road and nearest Railway Station</i>	<i>Mileage of the point where the approach road branches off</i>	<i>Facilities available like cook, utensils, furniture, light, water, etc.</i>	<i>No. of Suites</i>	<i>Distance to places of interest nearby</i>	<i>Any other information</i>
1	2	3	4	5	6	7	8
1.	Travellers' Bungalow at Bijapur (Class I).	Just by the side of Rathnagiri-Kolhapur-Miraj-Hyderabad Road, passing through Bijapur City. One mile, three furlongs from Railway Station.	Mile 195/3 of R.K. M.H. Road	Messman provided, fully furnished. An <i>acqua-privy</i> , electricity and tap water provided.	Two	The world famous Gol Gumbaz or the whispering gallery, Bijapur, is situated at a distance of one mile from the Travellers' Bungalow.	
2.	Circuit House at Bijapur (Class I).	do	do	do	One	do	The Circuit House and Travellers' Bungalow form parts of the same building.
3.	Inspection Bungalow in the Compound of Circuit House, Bijapur	do	do	do	Two	do	
4.	Tourist Bungalow, Class I, Bijapur	do	do	do	4 rooms 6 beds	do	
5.	Inspection Bungalow (Anand Mahal) at Bijapur (Class I).	Two furlongs from R.K.M.H. Road passing through Bijapur city. It is one mile, five furlongs from Railway Station.	Mile No. 195/2 R.K.M.H. Road	No messman is provided, only sweeper provided. Partially furnished, utensils, <i>acqua-privy</i> , electricity and tap water provided.	One	Gol Gumbaz is about a mile.	
6.	Low-Income Tourist Home, Class II, Bijapur.	do	do	Messman and sweeper provided	3 double rooms 3 treble rooms 5 single rooms 1 general room of 5 beds (25 beds in all)		

<i>Sl. No.</i>	<i>Name of the Bungalow and class</i>	<i>Approach road and the distance from the nearest main road and nearest Railway Station</i>	<i>Mileage of the point where the approach road branches off</i>	<i>Facilities available like cook, utensils, furniture, light, water, etc.</i>	<i>No. of Suites</i>	<i>Distance to places of interest nearby</i>	<i>Any other information</i>
1	2	3	4	5	6	7	8
7.	Inspection Bungalow at Kumatgi, Bijapur Taluk (Class II).	Near Ratnagiri-Kolhapur-Miraj-Bijapur-Hyderabad Road; ten miles, six furlongs from Bijapur Railway Station.	Mile No. 207/4 of R.K.M.H. Road.	Messman and sweepers not provided. Partially furnished; utensils provided, Indian type latrine. No well, but arrangements are made to supply water to the travellers.	One	Jalamandir is at a distance of three furlongs	
8.	Inspection Bungalow at Tikota, Taluk Bijapur (Class II).	On the road side, fourteen miles two furlongs from Bijapur Railway Station.	Mile No. 182/5 of R.K.M.H. Road.	Messman and sweeper not provided. Partially furnished, utensils provided. Indian type latrine; well water.	One		
9.	Inspection Bungalow at Honwad, Taluk Bijapur (Class II).	On the road side, 22 miles, two furlongs from Bijapur Railway Station.	Mile No. 175/4 of R.K.M.H. Road.	Messman and sweeper not provided; furnished; utensils, well water, latrine provided.	One		
10.	Inspection Bungalow at Managoli, Taluk Bagewadi (Class II).	Near Bijapur-Bagewadi Road; 16 miles from Bijapur Railway Station.	Near Mile No. 15 of Bijapur-Bagewadi Road.	Messman and sweeper not provided. Partially furnished. No well, but arrangements are made to supply water to the travellers.	Two		
11.	Inspection Bungalow at Bagewadi, Taluk Bagewadi (Class II).	About half a furlong from Bijapur-Bagewadi Road; 12 miles from Telgi Railway Station.	Mile No. 25/6 of Bijapur-Bagewadi Road.	Messman and sweeper not provided. Fully furnished; utensils, <i>acqua-privy</i> , well water provided.	Two		

<i>Sl. No.</i>	<i>Name of the Bungalow and class</i>	<i>Approach road and the distance from the nearest main road and nearest Railway Station</i>	<i>Mileage of the point where the approach road branches off</i>	<i>Facilities available like cook, utensils, furniture, light, water, etc.</i>	<i>No. of Suites</i>	<i>Distance to places of interest nearby</i>	<i>Any other information</i>
1	2	3	4	5	6	7	8
12.	Inspection Bungalow at Sindgi, Taluk Sindgi (Class I).	One mile from R. K. M. H. Road; 34 miles, six furlongs from Bijapur Railway Station.	Mile No. 231/6 of R. K. M. H. Road.	Messman and sweeper not provided, Partially furnished; utensils provided, <i>acqua-privy</i> and well water.	Two	Ramanahalli tank at a distance of ten miles.	
13.	Inspection Bungalow at Chadchan, Taluk Indi (Class I).	By the side of Indi-Shirdhon Road in mile No. 18/2 from Indi Railway Station.	Mile No. 18/3 of Indi-Shirdhon Road.	Messman and sweeper not provided; partially furnished; utensils provided, <i>acqua-privy</i> and well water.	Two		
14.	Inspection Bungalow at Kolhar, Taluk Bagewadi (Class II).	About half a furlong from the Sholapur-Hubli Road; 11 miles, four furlongs from Telgi Railway Station.	Mile No. 89/8 of Sholapur-Hubli Road.	Messman and sweeper not provided; partially furnished; utensils provided, <i>acqua-privy</i> and well water.	One		
15.	Inspection Bungalow at Mulwad, Bijapur Taluk (Class II).	By the side of Sholapur-Hubli Road; two miles from Mulwad Railway Station.	Mile No. 76/2 of Sholapur-Hubli Road.	Messman and sweeper not provided; partially furnished; utensils provided; well water supply.	One		
16.	Inspection Bungalow at Zalki, Taluk Indi (Class II).	Nine miles, eight furlongs from Indi Railway Station.	Mile No. 30/6 of Sholapur-Hubli Road.	Messman and sweeper not provided; partially furnished; utensils provided; <i>acqua-privy</i> and well water.	Two		
17.	Inspection Bungalow at Jamkhandi, Taluk Jamkhandi (Class I).	300 feet from the main road; 33 miles, five furlongs from Kudchi Railway Station.	Mile No. 33/5 of Kudchi-Jamkhandi Road.	Messman and sweeper provided; fully furnished; light (electricity), flush type latrines, and tap water.	Four		
18.	Inspection Bungalow at Savalgi, Jamkhandi Taluk (Class II).	One furlong from the main road; 45 miles, six furlongs from Kudchi Railway Station.	Telsang-Savalgi-Jambagi-Jamkhandi Road.	Messman and sweeper not provided; partially furnished; utensils provided, flush type latrine and well water.	Two		

<i>Sl. No.</i>	<i>Name of the Bungalow and class</i>	<i>Approach road and the distance from the nearest main road and nearest Railway Station</i>	<i>Mileage of the point where the approach road branches off</i>	<i>Facilities available like cook, utensils, furniture, light, water, etc.</i>	<i>No. of Suites</i>	<i>Distance to places of interest nearby</i>	<i>Any other information</i>
1	2	3	4	5	6	7	8
19.	District Bungalow at Hippargi, Taluk Sindgi (Class II).	By the side of R. K. M. H. road; 22 miles, five furlongs from Bijapur Railway Station.	Mile No. 219/4 of R.K.M.H. Road.	Messman and sweeper not attached. Partially furnished. Utensils provided. Indian type latrine, and well water.	One		
20.	Inspection Bungalow at Muddebihal (Class II).	Just by the side of Almatti-Muddebihal Road in Mile No. 1/1. It is 16 miles from Almatti Railway Station.	Mile No. 1 of Muddebihal-Almatti Road.	Messman and sweeper not provided. <i>Acqua-privy</i> , latrine and well water.	One	18 miles from Talikot.	
21.	Inspection Bungalow at Hullur (Class II).	Just by the side of Almatti-Muddebihal Road in Mile No. 10. It is eight miles from Railway Station.	Mile No. 10 of Muddebihal-Almatti Road.	Messman and sweeper not provided. Part-time chowkidar; not furnished.	One	Eight miles from Yelgur.	
22.	Inspection Bungalow at Indi (Class II).	Three miles from Indi Railway Station.	Mile No. 1 of Indi-Bijapur Road.	Messman not provided; <i>Acqua-privy</i> , latrine and well water. The bungalow is furnished.	Two		
23.	Inspection Bungalow, Almel (Class II).	22 miles from Indi Railway Station.	Mile No. 18/4 of Indi-Sindgi Road.	Messman and sweeper not provided. The bungalow is furnished.	Two		
24.	Inspection Bungalow at Nad (Class II).	13 miles, seven furlongs from Indi Railway Station.	Mile No. 103 of Indi-Sindgi Road.	Messman and sweeper not provided.	One		
25.	Talikot Inspection Bungalow (Class I).	Mile No. 1 of Talikot Road; 47 miles from Telgi Railway Station.	Mile No. 1 of Talikot-Devar Hippargi Road.	Messman not provided. The Bungalow is fully furnished. Attached latrines; well water supply.	One	47 miles from Telgi Railway Station.	} Located in one Bungalow.
26.	Talikot Travellers' Bungalow (Class I).	do do ..	do ..	do do ..	One	do ..	

TABLE VII—B

List of Dak Bungalows, Rest Houses and Inspection Bungalows in Bagalkot Division (Bijapur District)

Sl. No.	Name of the Bungalow and class	Approach road and the distance from the nearest main road and nearest Railway Station	Mileage of the point where the approach road branches off	Facilities available like cook, utensils, furniture, light, water, etc.	No. of Suites	Distance to places of interest nearby	Any other information
1	2	3	4	5	6	7	8
1.	Inspection Bungalow at Bagalkot (Class I).	Two furlongs from approach road; one mile three furlongs from Bagalkot Railway Station.	M. No. 164/4 of VBB Road.	Messman and sweeper provided; fully furnished. Electricity and tap water (electrically pumped).	3 Suites	The Bagalkot cement factory is at a distance of one and a half miles.	Converted into 6 suites of which 3 are of I.B. and 3 of T.B.
2.	Travellers' Bungalow at Bagalkot (Class I).	do ..	do ..	do do ..	3 Suites	do ..	
3.	Inspection Bungalow at Kaladgi (Class I).	On the roadside; fourteen miles, three furlongs from Bagalkot Railway Station.	M. No. 150/2 of VBB Road.	Messman and sweeper are not provided; partly furnished. Borewell water.	2 Suites	Kalaskop Tank site at a distance of five miles.	
4.	Inspection Bungalow at Bilgi (Class II).	On roadside; twenty miles from Bagalkot Railway Station.	M. No. 3 of Bilgi-Jamkhandi Road.	Messman and sweeper are not provided; partly furnished; well water.	1 Suite		
5.	Tourist Bungalow at Badami (Class II).	On the roadside; four miles from Badami Railway Station.	M. No. 0/4 of Badami-Ram-durg Road.	Messman provided; sweeper not provided. Partially furnished. Well water.	12 Rooms	Badami caves at a distance of one mile; Banashankari temple—three miles; Chalachgud bridge site—three miles and Shivayoga Mandir and Mahakut—five miles.	

<i>Sl. No.</i>	<i>Name of the Bungalow and class</i>	<i>Approach road and the distance from the nearest main road and nearest Railway Station</i>	<i>Mileage of the point where the approach road branches off</i>	<i>Facilities available like cook, utensils, furniture, light, water, etc.</i>	<i>No. of Suites</i>	<i>Distance to places of interest nearby</i>	<i>Any other information</i>
1	2	3	4	5	6	7	8
6.	Inspection Bungalow at Badami (Class I).	Same as in serial No. 5 above		Messman and sweeper not provided. Partially furnished and well water provided.	1 Suite	Same as in serial No. 5 above	
7.	Travellers' Bungalow at Badami (Class I).	On the roadside, one and a half furlongs from Badami Railway Station.	M. No. 3/1 of Badami-Batkurki Road.	Messman and sweeper not provided. Partially furnished; bore-well water.	2 Suites		
8.	Inspection Bungalow at Kulgeri (Class II).	On the roadside; 15/5 miles from Badami Railway Station.	M. No. 12/5 of Badami-Ram-durg Road.	Messman and sweeper not provided. Partially furnished, well water.	1 Suite		
9.	Inspection Bungalow at Katageri (Class II).	On the roadside; two furlongs from Guledgud Railway Station.	M. No. 1 of Guledgud Railway Station-Agasarkop Road.	Messman and sweeper not provided. Partially furnished and river water nearby.	1 Suite		
10.	Inspection Bungalow at Hungund. (Class II).	On roadside; 31 miles, four furlongs from Bagalkot Railway Station.	M. No. 194/1 of VBB Road.	Messman and sweeper not provided. Partially furnished; utensils provided; acqua-privy and bore-well water.	2 Suites		
11.	Inspection Bungalow at Kamatgi (Class II).	On roadside; 16 miles, four furlongs from Bagalkot Railway Station.	M. No. 179 of VBB Road.	Messman and sweeper not provided. Partially furnished; utensils provided; acqua-privy, arrangement is made to supply water.	1 Suite		
12.	Tourist Bungalow at Aihole (Class II).	On the roadside; 25 miles, four furlongs from Bagalkot Railway Station.	M. No. 5/5 of Amingad-Aihole Road.	Messman and sweeper not provided. Partially furnished; bore-well water.	11 Rooms	Famous Aihole temples are nearby.	
13.	Inspection Bungalow at Mudhol (Class I).	One furlong from main road; 37 miles, six furlongs from Chikodi Railway Station.	M. No. 0/1 of Mudhol-Lokapur Road.	Messman and sweeper not provided; fully furnished; utensils provided; flush type latrine and bore-well water.			

Metric Weights and Measures*Length—*

- 10 millimetres = 1 centimetre
 100 centimetres = 1 metre.
 1,000 metres = 1 kilometre.
 1,852 metres = 1 nautical mile (international).

Area—

- 100 square millimetres = 1 square centimetre.
 10,000 square centimetres = 1 square metre or centiare.
 100 square metres = 1 are.
 100 ares = 1 hectare.
 100 hectares or 1,000,000 square metres = 1 square kilometre.

Volume—

- 1,000,000 cubic centimetres = 1 cubic metre.

Capacity—

- 1,000 millilitres = 1 litre.
 1,000 litres = 1 kilolitre.

Weights—

- 1,000 milligrams = 1 gram.
 1,000 grams = 1 kilogram.
 100 kilograms = 1 quintal.
 1,000 kilograms = 1 tonne.
 200 milligrams = 1 carat.

Conversion Factors*Length—*

- 1 inch = 2.54 centimetres
 1 foot = 30.48 centimetres
 1 yard = 91.44 centimetres
 1 mile = 1.61 kilometres
 1 nautical mile (UK) = 1853.18 metres
 1 nautical mile (international) = 1852 metres

Volume—

- 1 cubic foot = 0.028 cubic metre

Area—

- 1 square foot = 0.093 square metre.
 1 square yard = 0.836 square metre.
 1 square mile = 2.59 square kilometres.
 1 acre = 0.405 hectare

Capacity—

- 1 gallon (Imperial) = 4.55 litres
 1 seer (80 tolas) = 0.937 litre
 1 Madras measure = 1.77 litres

Temperature—

- T° Fahrenheit = $\frac{9}{5}$ (T° centigrade) + 32

Monetary Conversion Table

<i>Annas</i>	<i>Pies</i>	<i>Paise</i>	<i>Annas</i>	<i>Pies</i>	<i>Paise</i>
0	3	2	8	3	52
0	6	3	8	6	53
0	9	5	8	9	55
1	0	6	9	0	56
1	3	8	9	3	58
1	6	9	9	6	59
1	9	11	9	9	61
2	0	12	10	0	62
2	3	14	10	3	64
2	6	16	10	6	66
2	9	17	10	9	67
3	0	19	11	0	69
3	3	20	11	3	70
3	6	22	11	6	72
3	9	23	11	9	73
4	0	25	12	0	76
4	3	27	12	3	77
4	6	28	12	6	78
4	9	30	12	9	80
5	0	31	13	0	81
5	3	33	13	3	83
5	6	34	13	6	84
5	9	36	13	9	86
6	0	37	14	0	87
6	3	39	14	3	89
6	6	41	14	6	91
6	9	42	14	9	92
7	0	44	15	0	94
7	3	45	15	3	95
7	6	47	15	6	97
7	9	48	15	9	98
8	0	50	16	0	100

Re. 1=Annas 16=Paise 100.

Pies 12=Anna 1.

Annas 16=Rupee 1.

Rupee 1=Paise 100.

**Metric Weights and their nearest equivalents in F.P.S.
System and in the District of Bijapur**

Sl. No.	Weights in Metric System (1 kg. = 1,000 gms.)		Equivalents in F.P.S. System		Equivalents in the District of Bijapur		
	kg	g.	Lbs.	Oz.	Mds.	Srs.	Tolas
1	50	..	110	3 5/8	1	13	44
2	20	..	44	1 1/2	0	21	32
3	10	..	22	3/4	0	10	56
4	5	..	11	3/8	0	5	28
5	2	..	4	6 1/2	0	2	9 3/5
6	1	..	2	3 1/4	0	1	4 4/5
7		500	1	1 3/5	0	0	43
8		200	0	7	0	0	17
9		100	0	3 1/2	0	0	8 1/2
10		50	0	1 3/4	0	0	4 1/3
11		20	0	7/10	0	0	1 3/4
12		10	0	7/20	0	0	17/20
13		5	0	7/40	0	0	17/40
14		2	0	7/100	0	0	17/100
15		1	0	7/200	0	0	17/200

Measures which were in use in Bijapur District and their equivalents

		Seer	Pav	Chatak	Seer	Millilitre
2 litres	..	2	..	2	1	934
1 litre	..	1	..	1	1/2	467
500 ml	2	1/2	1/4	233
200 ml	3 2/5	1/8	117
100 ml	1 7/10	1/16	58
50 ml	17/20	1/32	29
20 ml	17/50		

Denominations of litre measure in use

20 litres	1 litre	50 ml
10 litres	500 ml	20 ml
5 litres	200 ml	
2 litres	100 ml	

Cylindrical type Aluminium, Brass and Stainless Steel pouring and dipping measures for liquids only.

G. I. Conical measures for kerosene and motor oils only.

1 Gallon = 4.55 litres

1 litre = 1,000 millilitres.

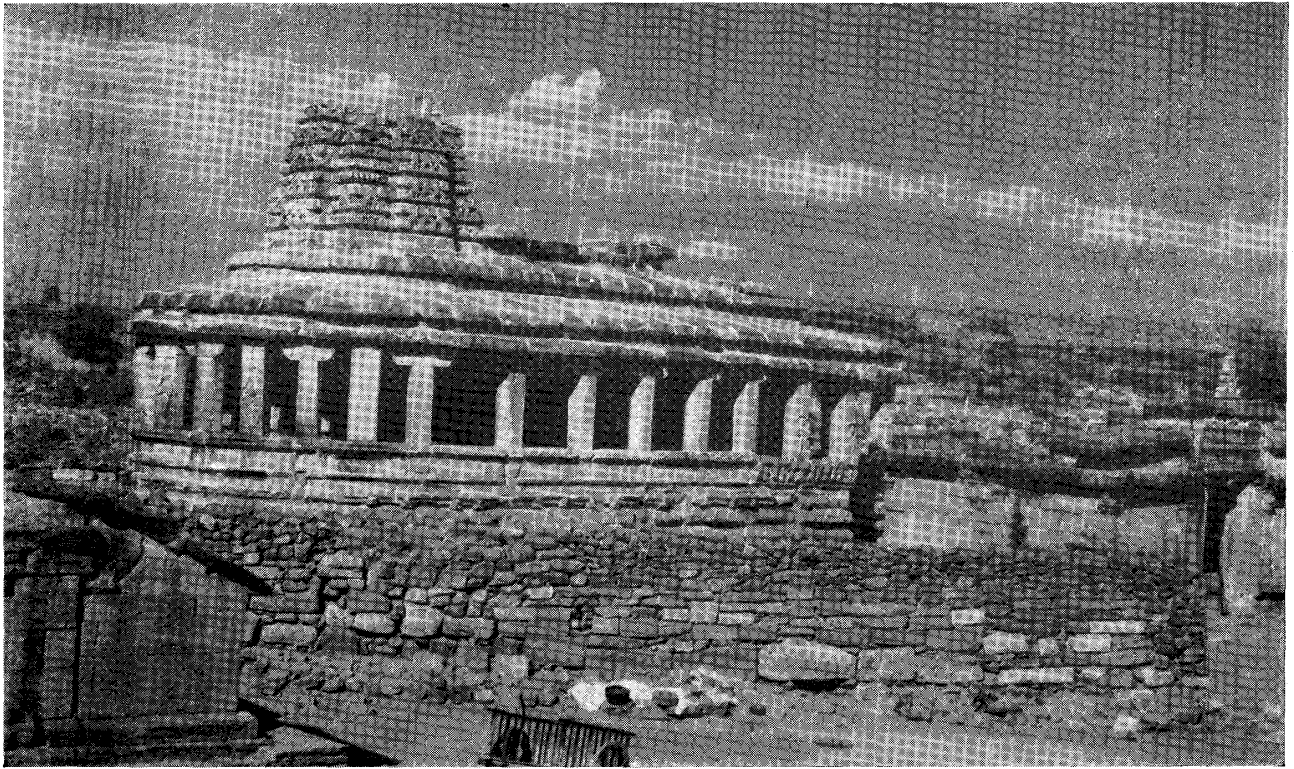
Weights in existence in Bijapur District prior to the introduction of Metric Weights, and their equivalents.					
Chataks (1 chatak=5 tolas)	Grams (to the nearest gram)	Chataks (1 chatak=5 tolas)	Grams (to the nearest gram)		
1	58	9	525		
2	117	10	583		
3	175	11	642		
4	233	12	700		
5	292	13	758		
6	350	14	816		
7	408	15	875		
8	467				
Seers (1sr. = 80 tolas).	Kilograms	Grams (to the nearest 10 grams)	Seers (1 sr. = 80 tolas)	Kilograms	Grams (to the nearest 10 grams)
1	2	3	1	2	3
1	..	930	21	19	600
2	1	870	22	20	530
3	2	800	23	21	460
4	3	730	24	22	390
5	4	670	25	23	330
6	5	600	26	24	260
7	6	530	27	25	190
8	7	460	28	26	130
9	8	400	29	27	60
10	9	330	30	27	990
11	10	260	31	28	930
12	11	200	32	29	860
13	12	130	33	30	790
14	13	60	34	31	730
15	14	..	35	32	660
16	14	930	36	33	590
17	15	860	37	34	520
18	16	800	38	35	460
19	17	730	39	36	390
20	18	660			
Maunds (1 maund=40 seers)	Kilograms (to the nearest kilogram)	Maunds (1 maund=40 seers)	Kilograms (to the nearest kilogram)		
1	2	1	2		
1	37	11	411		
2	75	12	448		
3	112	13	485		
4	149	14	523		
5	187	15	560		
6	224	16	597		
7	261	17	635		
8	299	18	672		
9	336	19	709		
10	373	20	746		

Source : Office of the Controller of Weights and Measures, Bangalore

SELECT BIBLIOGRAPHY

- Brown, Percy** . . . The Indian Architecture, Volumes I and II.
- Campbell, James M.** . . . Gazetteer of the Bombay Presidency, Volume XXIII, Government Central Press, Bombay, 1884.
- Choksey, R. D.** . . . Economic Life in the Bombay Karnatak, Asia Publishing House, Bombay, 1963.
- Cousens, Henry** . . . Bijapur and its Architectural Remains, Bombay, 1916.
- Cousens, Henry** . . . Chalukyan Architecture of the Kanarese Districts.
- Dave, J. H.** . . . Immortal India, Volume IV, Bharatiya Vidya Bhavan, Bombay, 1961.
- Diwakar, Ranganath and Kulkarni, R. B.** . . . Karmayogi Hanamantharayaru, Kouljagi Hanamantharao Smarak Nidhi, Hubli, 1958.
- Douglas, James** . . . A Book of Bombay
- Fleet, Dr. J. F.** . . . History of the Dynasties of the Kanarese Districts of the Bombay Presidency.
- Gray, Basil** . . . The Art of India and Pakistan
- Halappa, G. S.** . . . History of Freedom Movement in Karnatak, Volumes I and II, Mysore Government Publication.
- Joshi, R. V.** . . . Pleistocene Studies in the Malaprabha Basin
- Kauljagi, H. S. and Kauljagi, M. H.** . . . A visit to Bijapur, Samyukta Karnatak Press, Hubli, 1957.
- Krishnaswami Aiyangar, Dr. S.** . . . Ancient India and South Indian History and Culture, Vol. II, Poona Oriental Series, No. 74.
- Kulkarni Bros.** . . . Bijapur, 1935
- Kundangar, K. G.** . . . Inscriptions of Kolhapur and Northern Karnatak.
- Learmouth, A.T.A.** . . . A Regional Synthesis—Mysore State-Vol. II, Asia Publishing House, Bombay, and Statistical Publishing Society, Calcutta.
- Learmouth, A.T.A. and Bhat, L. S.** . . . An Atlas of Resources of Mysore State, Asia Publishing House and Statistical Publishing Society, Calcutta, 1961.
- Majumdar, R. C.** . . . History and Culture of the Indian People, Volumes I to VI, Bharatiya Vidya Bhavan, Bombay.
- Mensinkai, S. S.** . . . A Survey of Handicrafts in Eight Districts of Mysore State, Karnatak University, Dharwar, 1961.

- Modak, D. S.** Bombay Land System and Village Administration, Poona, 1932.
- Nandimath, Dr. S. C.** Studies in Inscriptions—III, Karnatak University Journal, Volume III, 1959, Dharwar.
- Nandimath, Dr. S. C.,
Basavanal, Prof. S. S.
and Srinivasa
Iyengar, Dr. K. R.** Commemoration Volume—Presented to Sardar Raja Lakhamgauda Basavaprabhu, Literary Committee, Lingayat Education Association, Dharwar, 1941.
- Nilakanta Sastri, K. A.** A History of South India from Pre-historic Times to the Fall of Vijayanagar, Oxford University Press, 1955.
- Padmaraj, H.** An Intelligent Tourist's Guide to Glory that is Bijapur, Shantiniketan, Bijapur, 1957.
- Panchamukhi, R. S.** Progress of Kannada Research in Bombay Province from 1941 to 1946.
- Rama Rao, M.** Glimpses of Dakkan History, Orient Longmans, Bombay—Calcutta—Madras, 1951.
- Reuben, Prof. T. and
Five Others.** Centenary Souvenir, Bijapur Municipality, 1854-1954, Bijapur Municipality, 1956.
- Sherwani, Haroon Khan** The Bahmanis of the Deccan, Saood Manzil, Himayatnagar, Hyderabad Deccan, 1953.
- Venkateswaran, P. A.** Agriculture in South India, Union Ministry of Food and Agriculture, New Delhi, 1961.
-
- Bijapur District Census Hand-Book, 1951
- Census of India—Paper No. I of 1962—1961 Census, Final Population Totals.
- Census of India, 1961, Volume XI, Mysore, Parts III and IV-B, 1965.
- Epigraphia Indica, Volumes VI, XXVIII and XXIX.
- Five-Year Plans, I, II and III
- Historical Inscriptions of Southern India
- Indian Antiquary, Volumes VIII and X.
- Manual of Election Law, Union Ministry of Law, New Delhi, 1961.
- Report of the Mysore Tenancy Agricultural Land Laws Committee, 1958.
- Rural Credit Follow-up Survey (1959-60), General Review Report, Reserve Bank of India, Bombay, 1962.
- South Indian Inscriptions, Volume XI.
- Statistical Abstract of Mysore—1959-60 and 1960-61.
- Statistical Outlines of Mysore, 1959 to 1962.
- Third Five-Year Plan of Bijapur District, 1965.



Durga Temple, Aihole (*See* pages 96, 97 and 480)



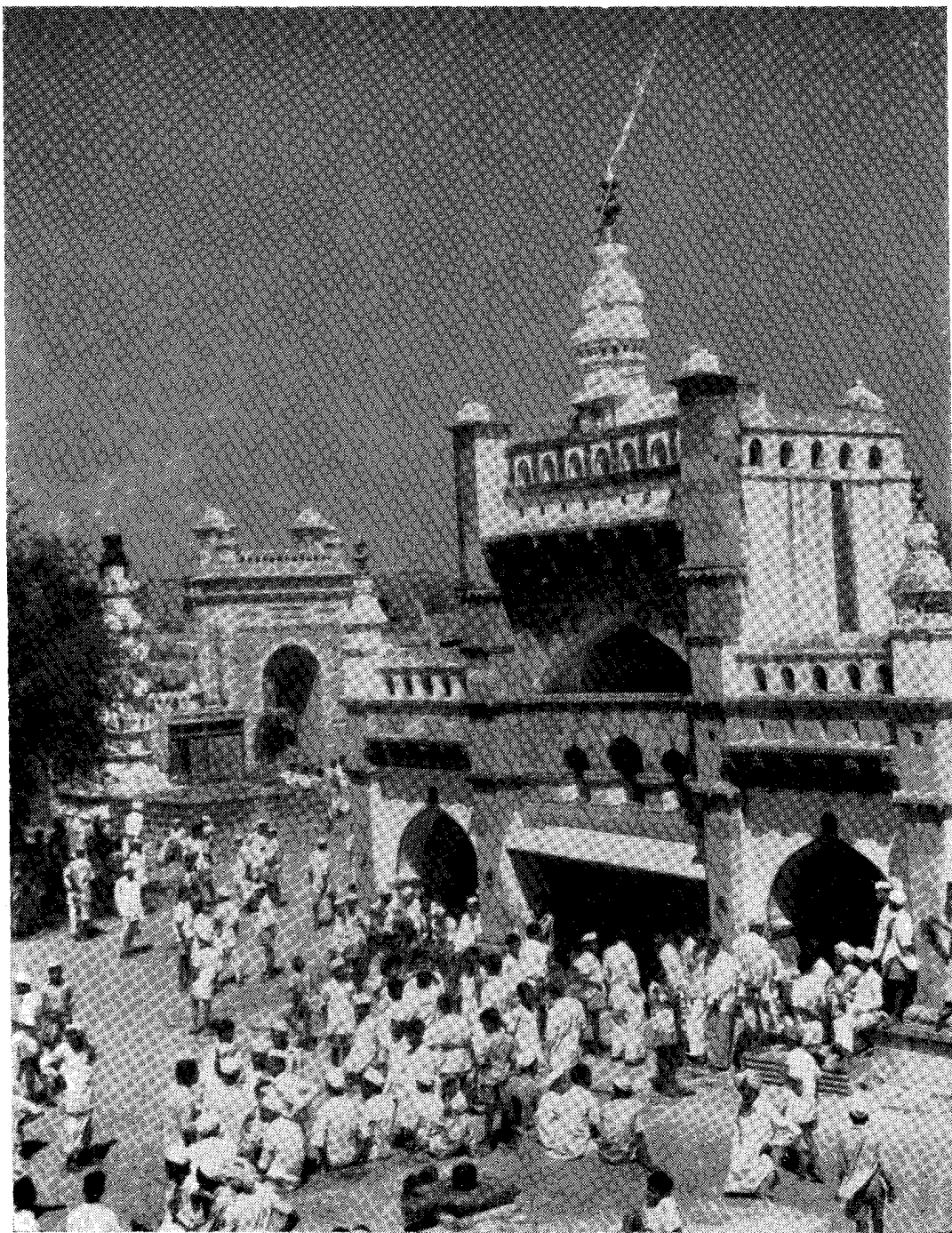
Carved Image of Narasimha in a Cave Temple at Badami



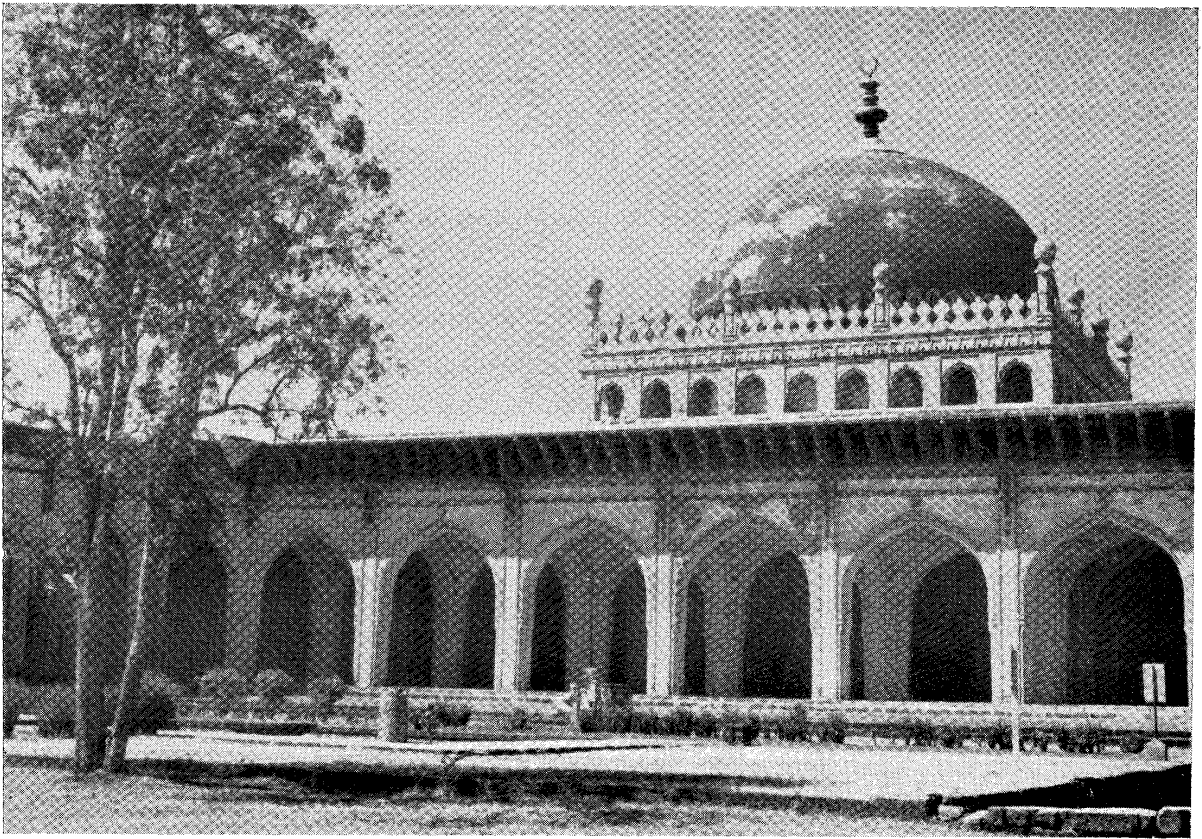
Virupaksha Temple, Pattadakal (*See* pages 96, 514 and 515)



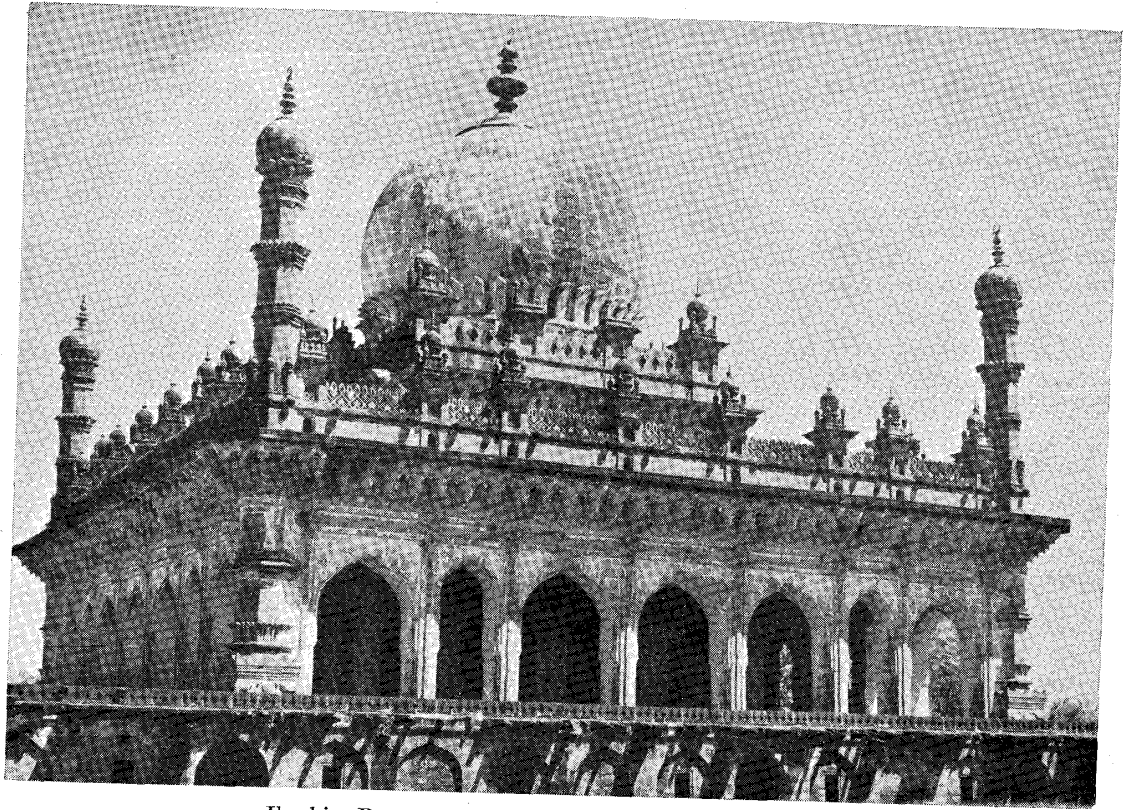
Galaganatha Temple, Pattadakal (*See page 515*)



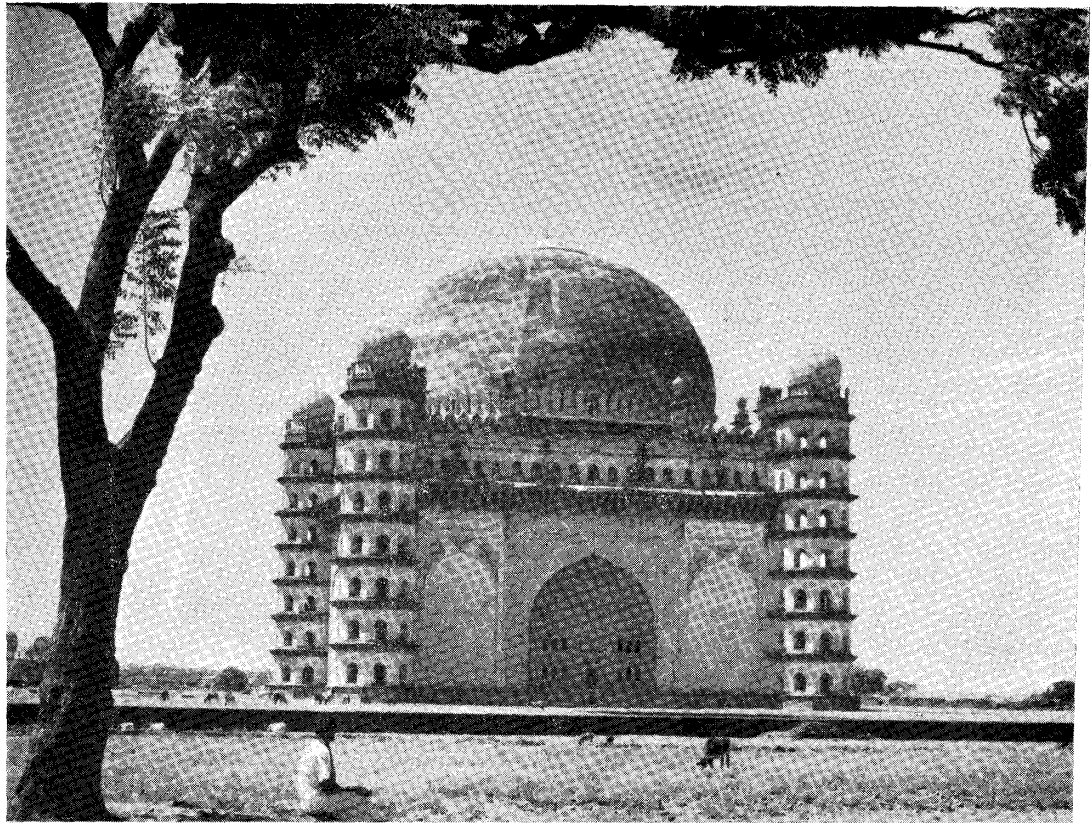
Basaveshwara Temple, Bagewadi (*See* page 486)



Jami Masjid, Bijapur (*See* pages 103, 497 and 498)



Ibrahim Roza, Bijapur (*See* pages 103, 104, 496 and 497)



Gol Gumbaz, Bijapur (See pages 103, 104, 495 and 496)